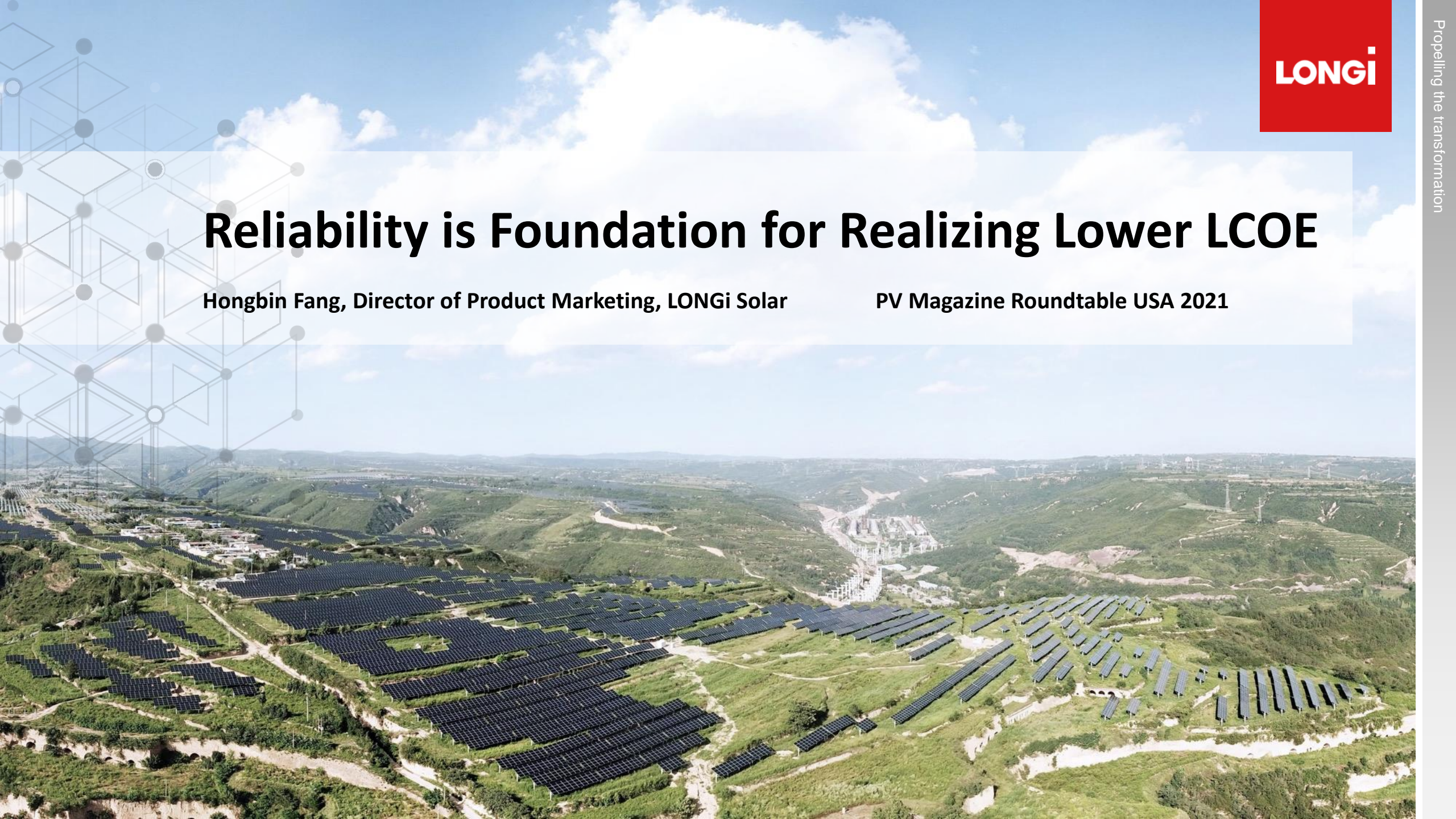


Reliability is Foundation for Realizing Lower LCOE

Hongbin Fang, Director of Product Marketing, LONGi Solar

PV Magazine Roundtable USA 2021

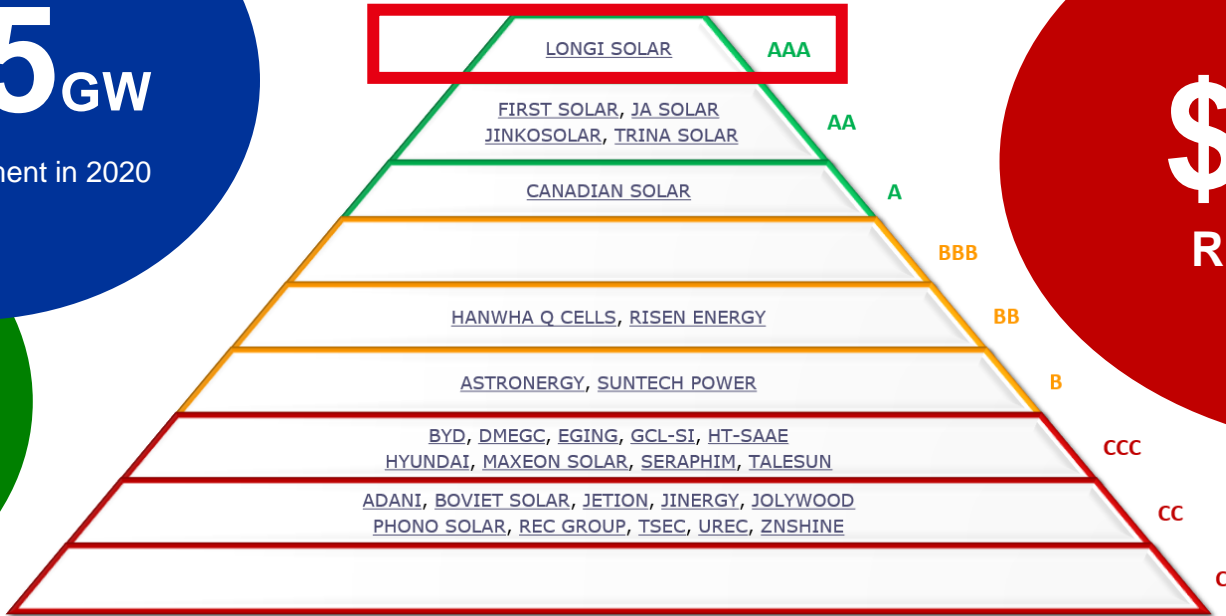


LONGi Is the Largest Wafer and Module Manufacturer and the Most Bankable Solar Module Brand

24.5_{GW}
Module shipment in 2020

58⁺_{GW}
Wafer shipment in 2020

\$400M
R&D investment in 2020

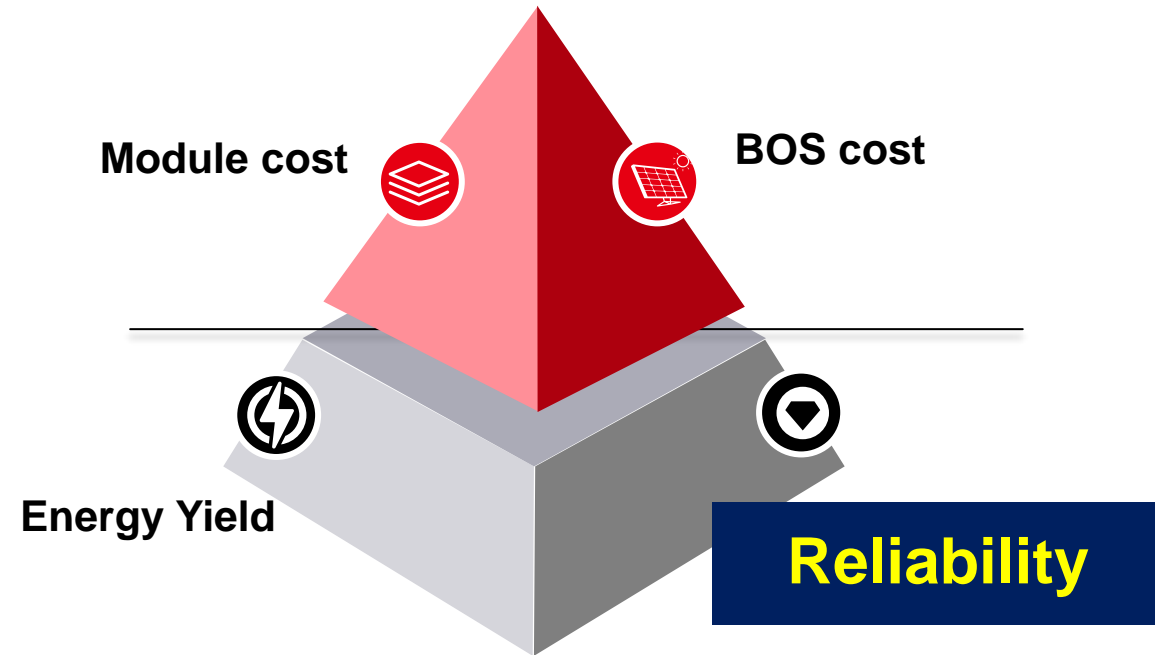


Reliability is Foundation for Realizing Lower LCOE

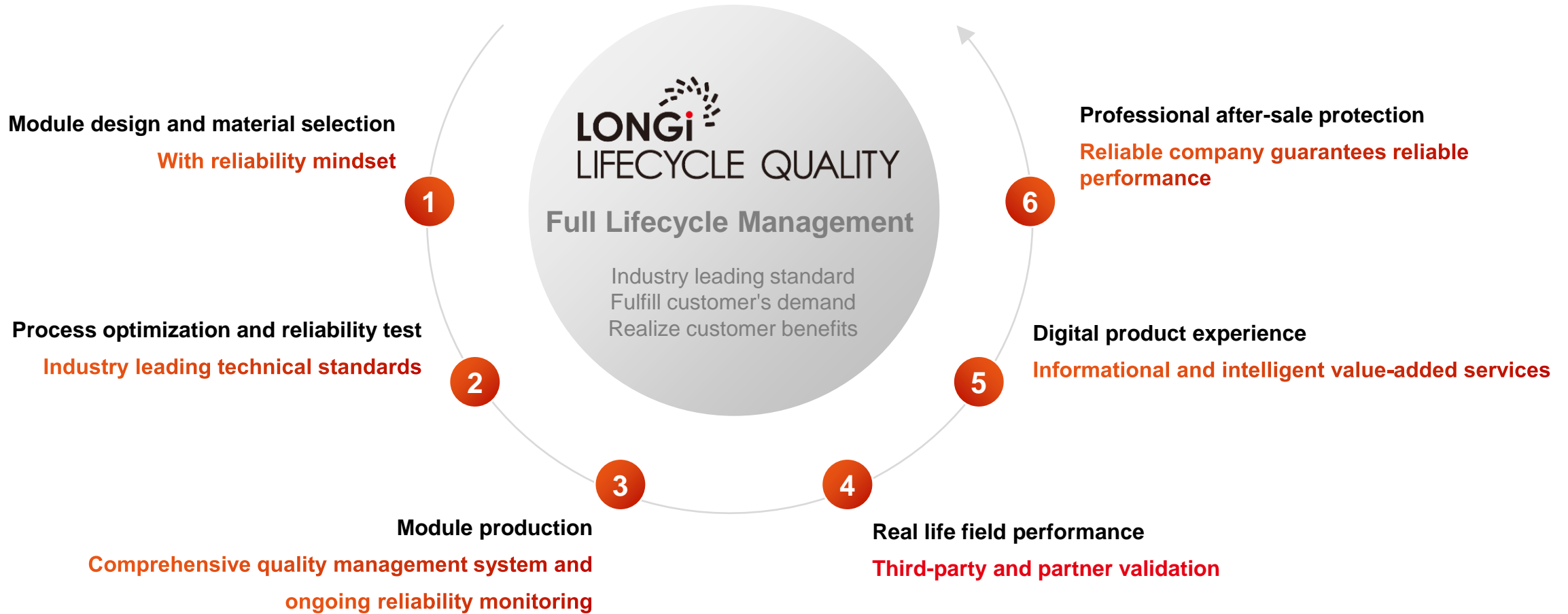
All innovative technologies need to demonstrate solid reliability before HVM implementation



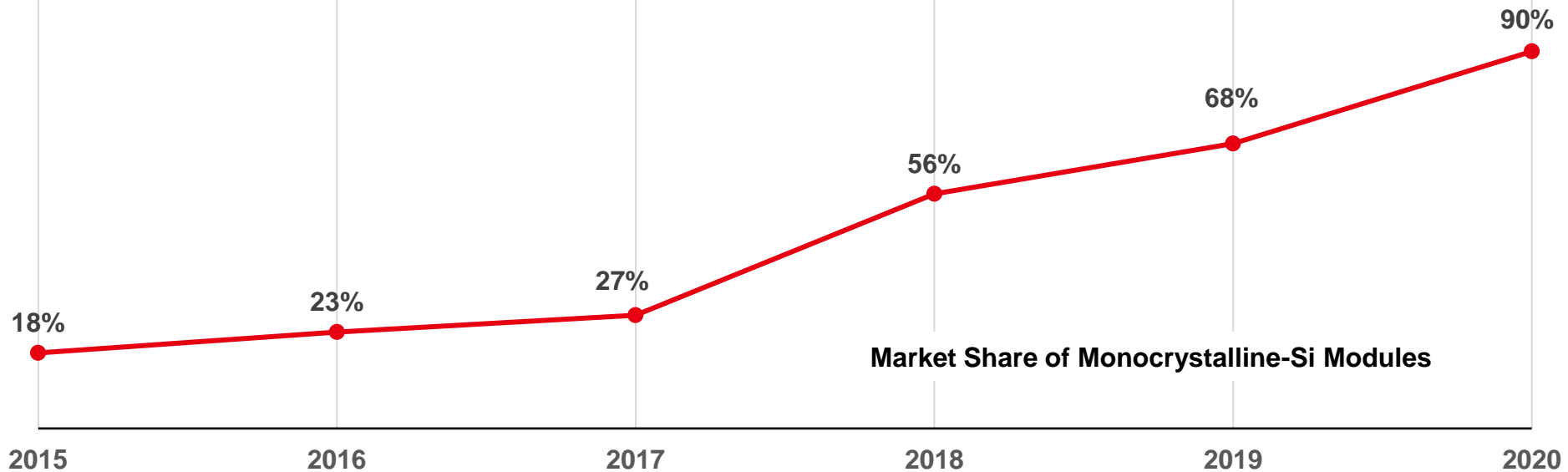
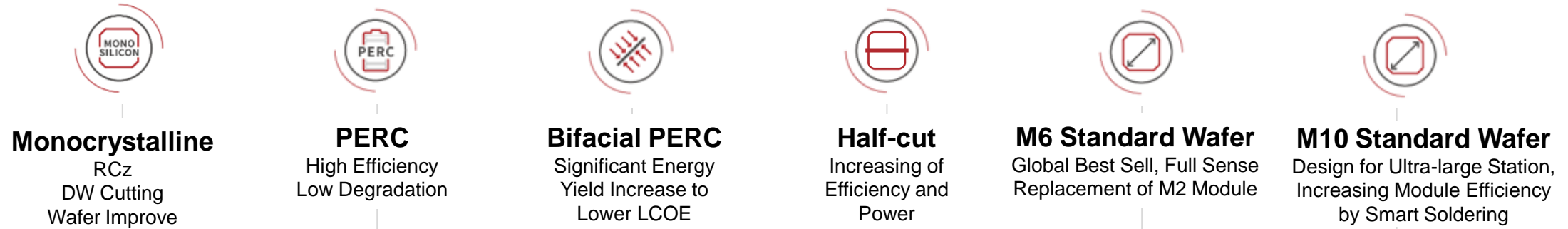
~



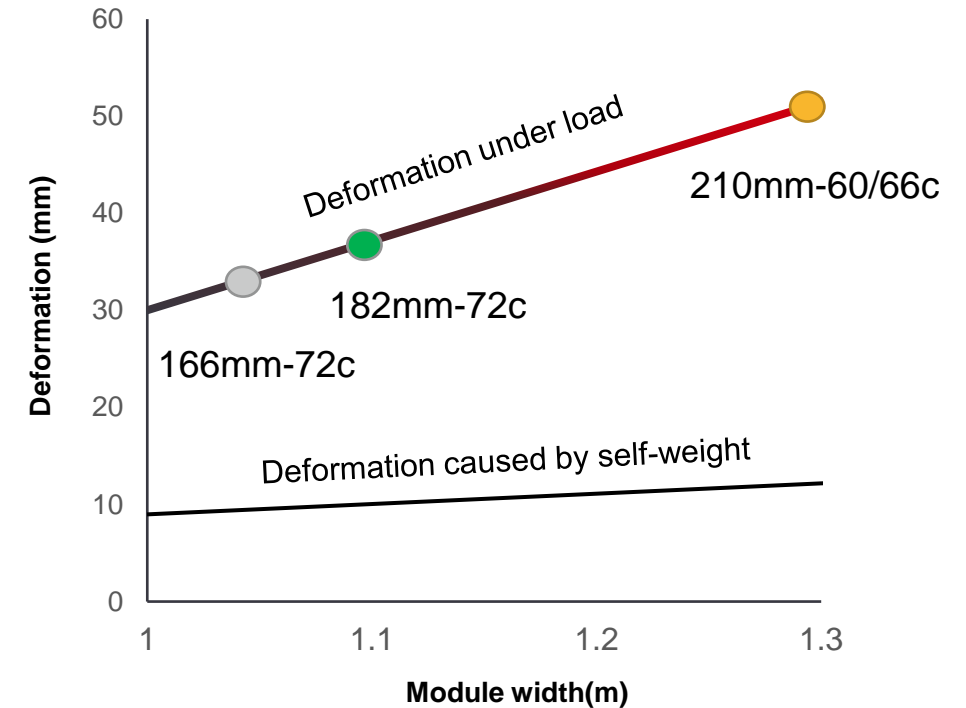
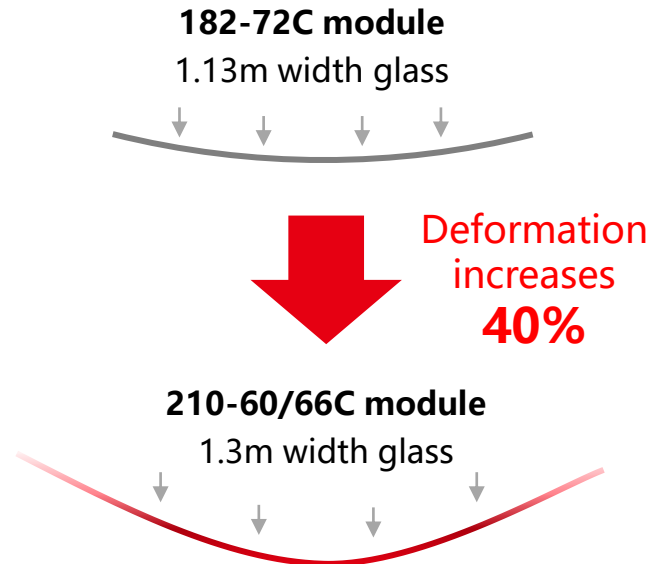
LONGi Takes Comprehensive Approach on Reliability



Major Technological Innovations in PV Industry

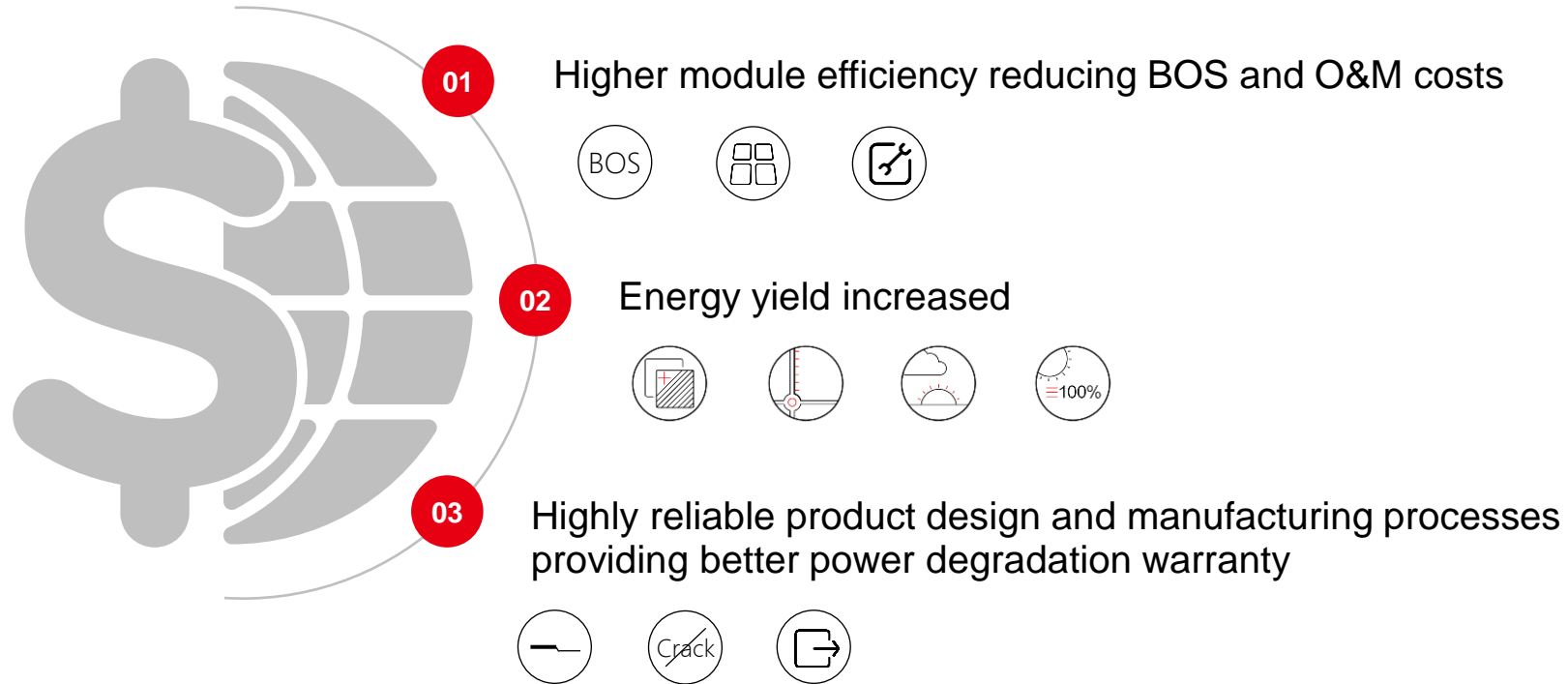


Reliability Risks with Oversized Modules



- Oversized modules (width >1.2m) yield >40% higher deformation under the same load
- Risks for microcrack and glass breakage increase significantly; module reliability is compromised
- Using the same 2+2mm glass construction, module size/power cannot continue to increase without compromising **reliability**

Value Proposition of High Efficiency Technology





Hongbin Fang, Director of Product Marketing
hbfang@longi.com